



ADLConnect Flight Plan Import and Export

Version 1.10

23.10.2020

1 Version History

Version 1.02 published 01.11.2019

Version 1.10 published 23.10.2020

2 Page Index

This manual contains numbered pages 1 to 14.

3 General Warning

While we do everything we can to ensure quality the ADLConnect app it might not work at any time. In addition the system may display false information. **NEVER PENETRATE WEATHER BASED ON THE INFORMATION PROVIDED BY THE ADL system.** This information is for situational awareness only. The device features a GPS moving map system. This system is designed to display the aircraft position in relation to the weather data. **THE ADLConnect app and ADL system IS NOT SUITABLE AS A MEANS OF PRIMARY NAVIGATION.** Especially the build in database is not updated in a regular aviation cycle. It is also not maintained to the standards of certified aviation databases

4 General Description

This manual describes on how to transfer flight plan data, so a list of aviation waypoints, between the ADLConnect app and popular other apps and services. Just to avoid any confusion some other vendors might also call this a route. The flight plan in this context is not an ATC flight plan.

Please note that due to some differences in databases between the different apps most flight plan waypoint will be transferred but some features might still be lost during the transfer. So please always double check the result.

5 iOS Only

This manual describes the iOS Version of the ADLConnect app. There is also an Android version but it is very limited regarding flight plan transfer features.

6 Flight Plan Import from Panel Mounted GPS

If the ADLConnect app is used together with an ADL devices (ADL110B, ADL120, ADL140, ADL150(B), ADL190 or ADL200) and this device is hard wired to a compatible panel mounted GPS you can activate the automatic flight plan import as follows. Please note that this disables the manual manipulation of the flight plan in the app. Also please note there is currently no way to export a flight plan from the ADL system directly to panel mounted avionics.

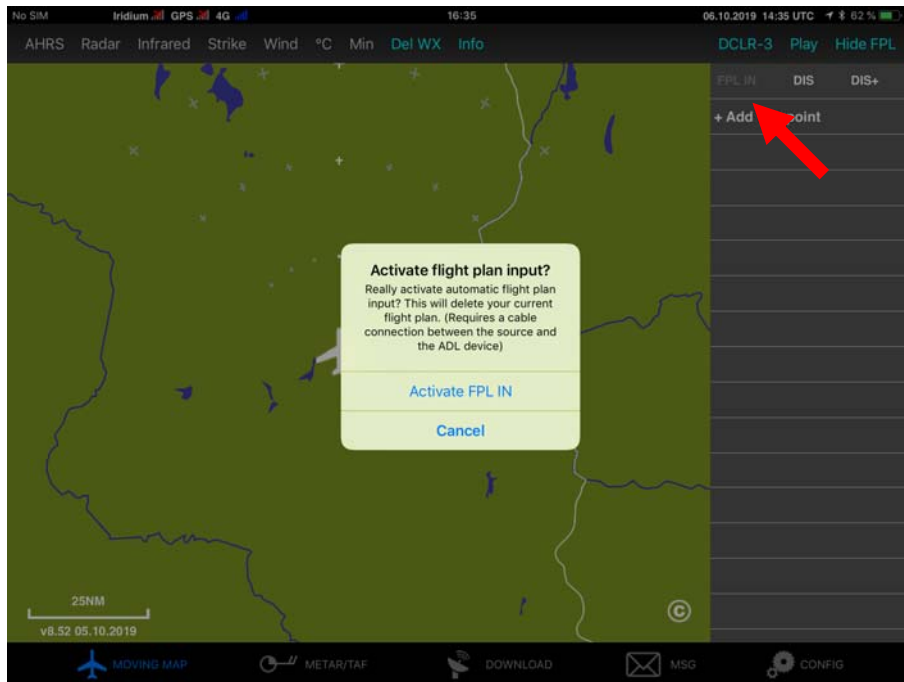


Figure 1 ADLConnect FPL IN

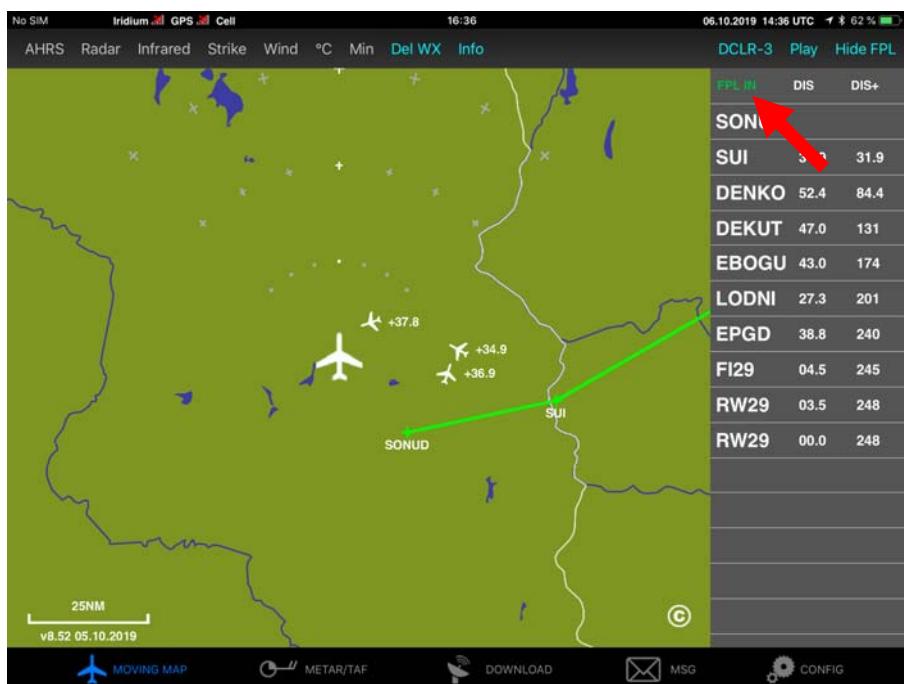


Figure 2 ADLConnect FPL IN

7 Flight Plan Import from Autorouter Briefing Email

When requesting the briefing email from Autorouter make sure you include either the Garmin *.fpl file format or the SkyDemon *.flightplan format. Then open the email on your iOS device and press on the attached file. ADLConnect will be listed as one of the compatible apps. Select it and the flight plan will be imported.

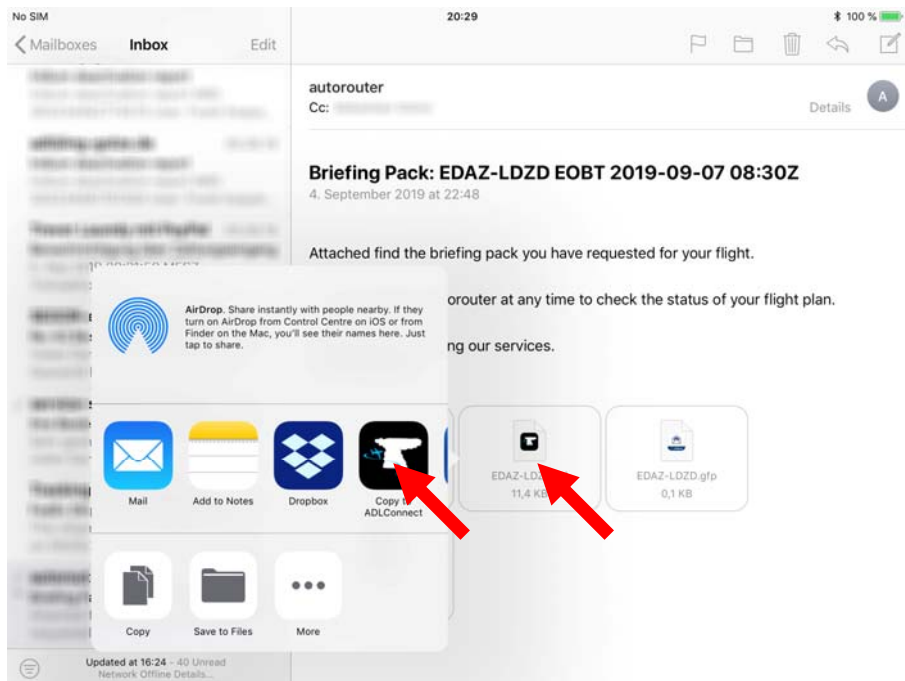


Figure 3 Autorouter Briefing Email © Autorouter

8 Flight Plan Import from Autorouter Website

Open the Autorouter website using your iOS device. Then when looking at the route details open the "Briefing information" tab. In the pull down menu right below the tab select "SkyDemon flight plan", "Garmin FPL" or "GPX". Press the Download button which appears right below the pull down menu.

Now the requested flight plan file will be downloaded. A new screen will appear listing compatible apps. Sometime you might have to press "more" depending on your installation. Select ADLConnect and the flight plan will be imported.

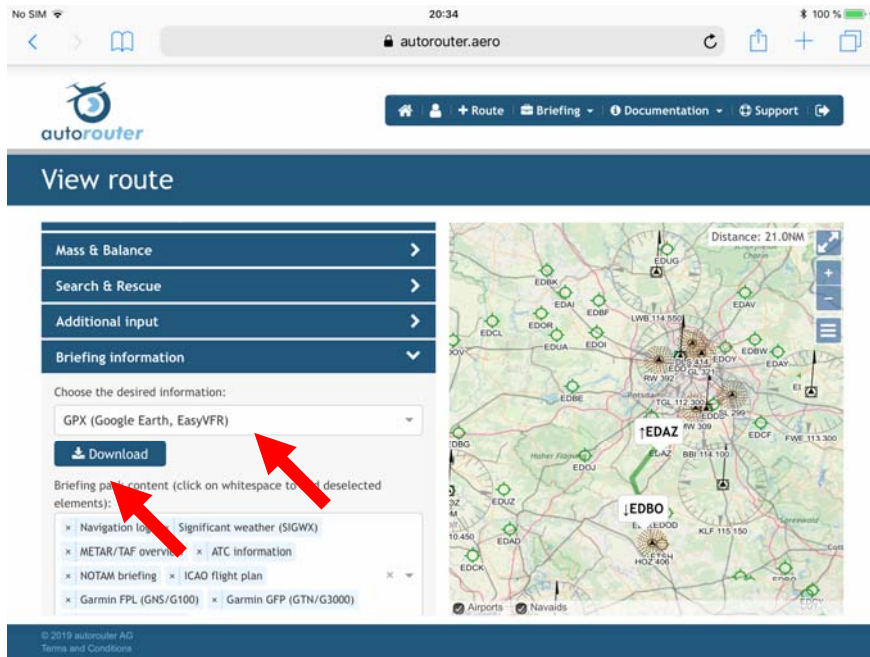


Figure 4 Autorouter Website © Autorouter

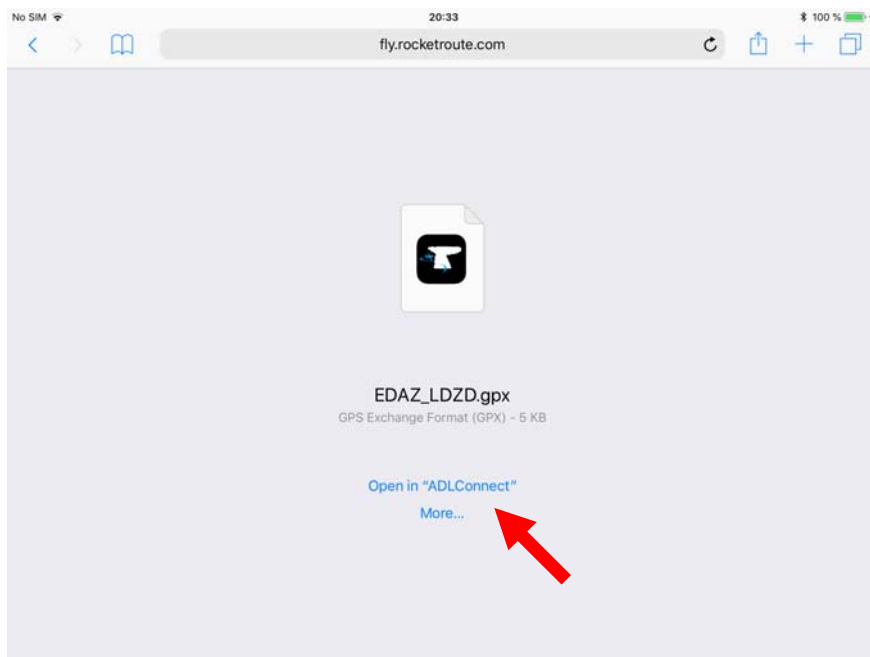


Figure 5 GPX Open in ADLConnect Dialog

9 Flight Plan Import from ForeFlight App

In the current Foreflight app open the flight plan with the FPL button. Press the send to button in the lower right corner of the flight plan control and then select "Clipboard". Now switch over to the ADLConnect app using the normal iOS method pressing the home button etc. Once you open the ADLConnect app the app will detect the flight plan information in the clipboard and ask if you would like to import this flight plan. If you press "Import" the flight plan data will be copied to the flight plan table in ADLConnect.

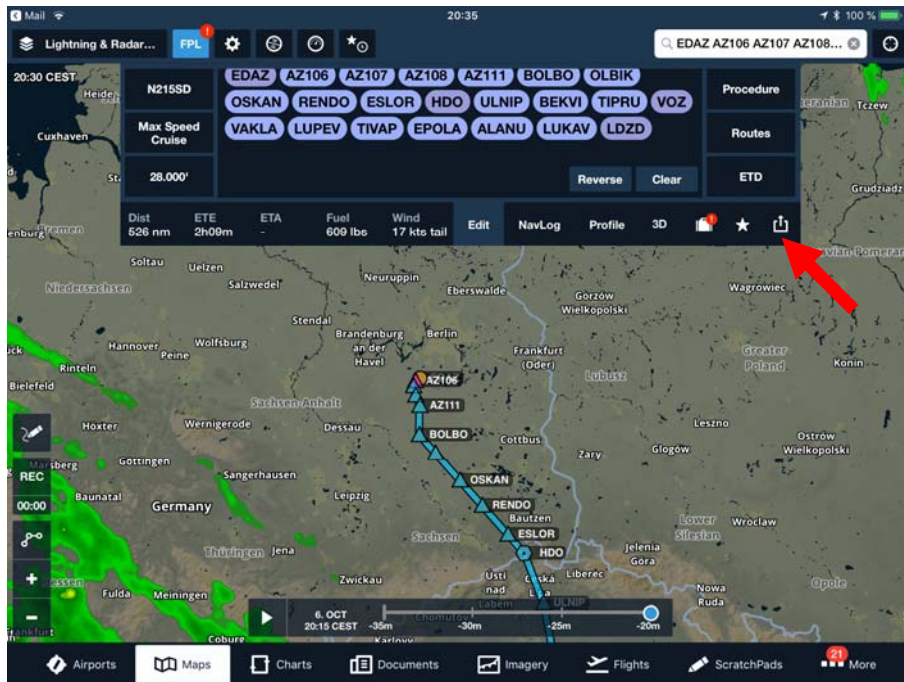


Figure 6 ForeFlight App © ForeFlight

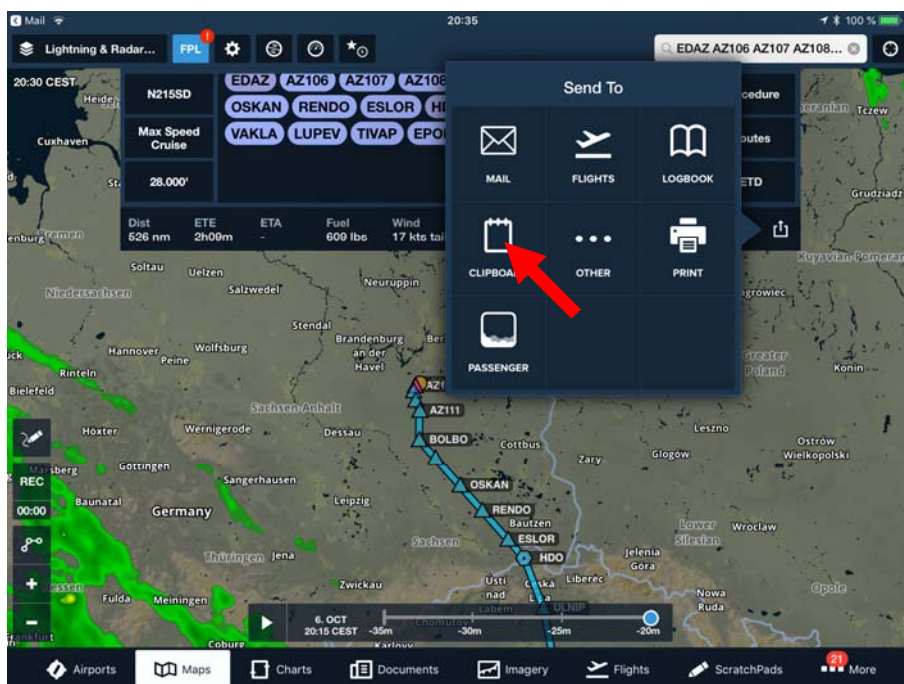


Figure 7 ForeFlight App © ForeFlight

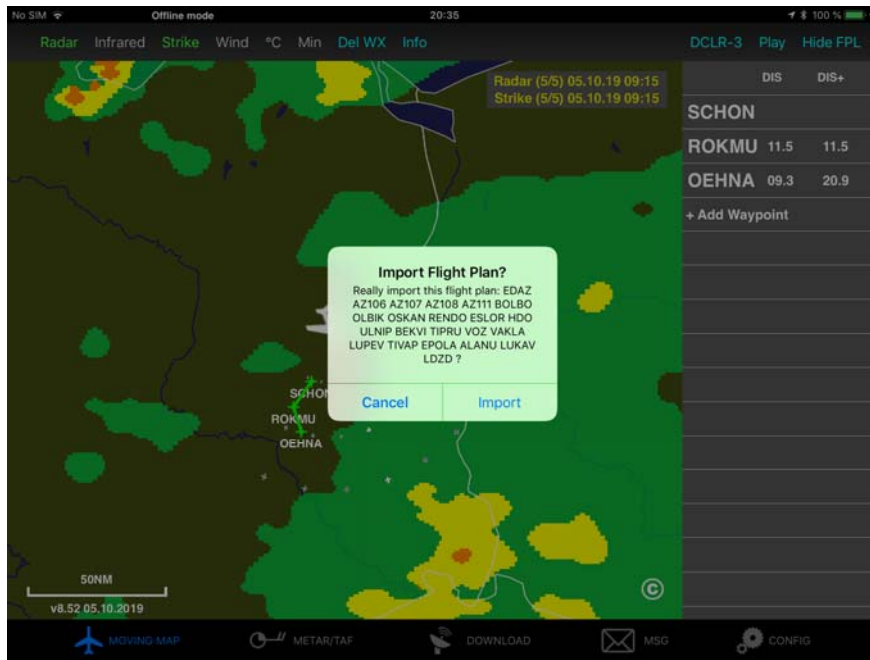


Figure 8 ADLConnect App

10 Flight Plan Import from Garmin Pilot App

In the latest Garmin Pilot app open the Flight Plan. Then press on the textual representation of the flight plan at the top of the waypoint list. Press down until the "Select All" control appears, press it and then press the Copy control shown right afterwards. Now you have a copy of the flight plan in the clipboard. Now you can switch over to ADLConnect and ADLConnect will offer to import the flight plan. Press "Import" and the flight plan will be available in ADLConnect.

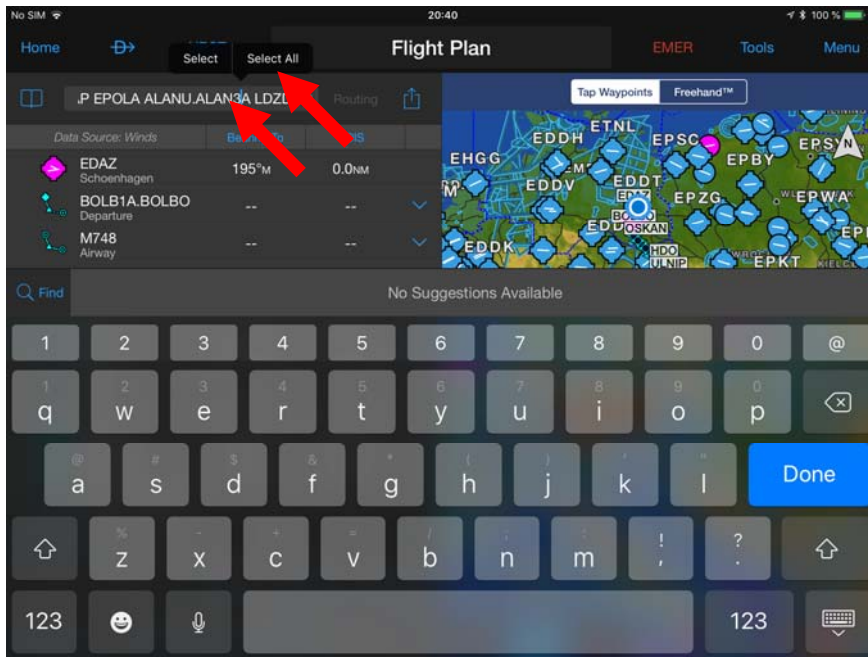


Figure 9 Garmin Pilot App © Garmin

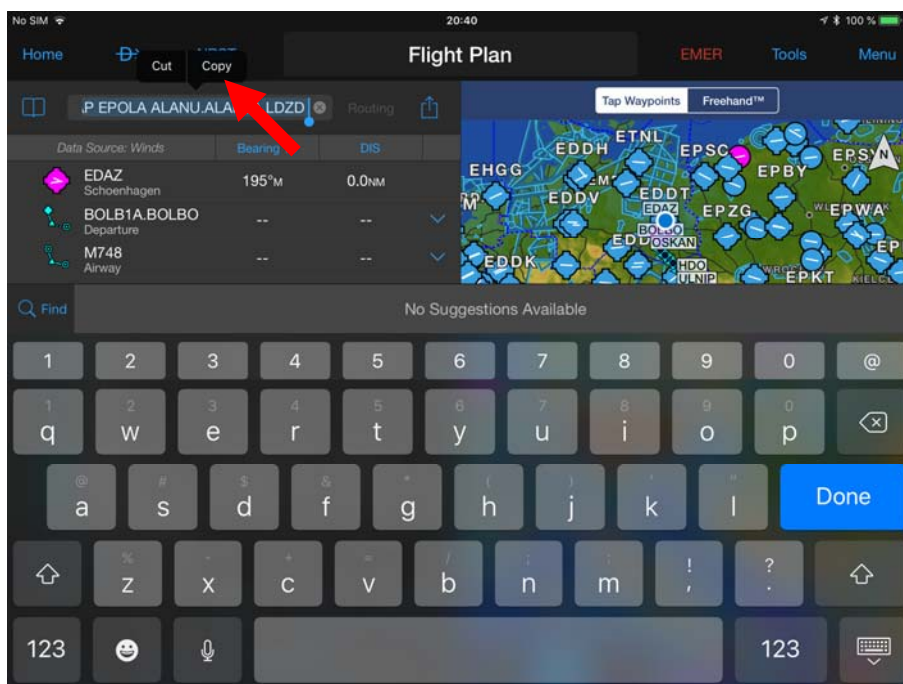


Figure 10 Garmin Pilot App © Garmin

11 Flight Plan Import from RocketRoute Website

Open the RocketRoute website using your iOS device. Then select your generated or saved flight plan. In the left menu you can scroll all the way down and there will be an option "ExportRoute". Select this option and a selection of formats will pop up. Then select "GPX".

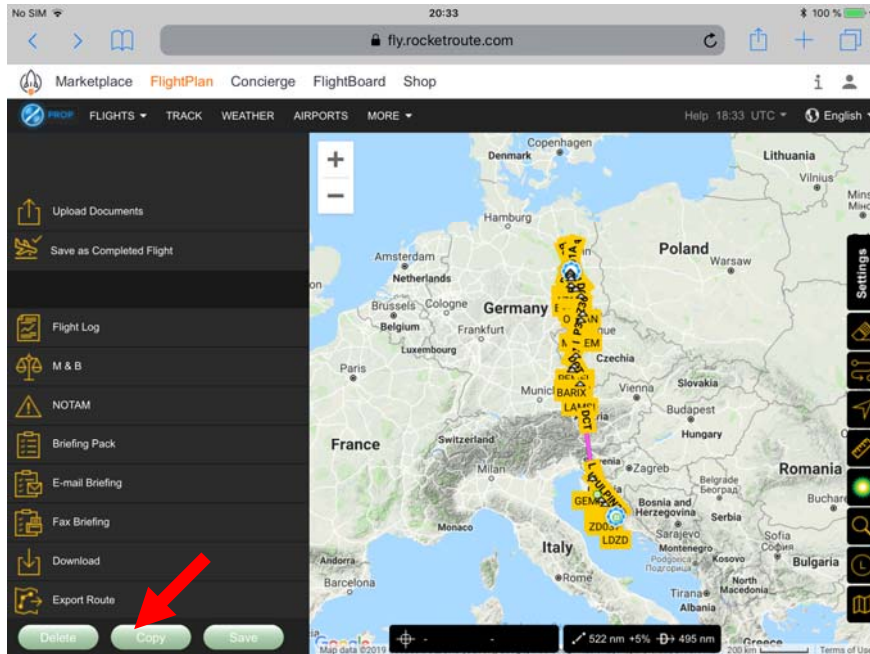


Figure 11 RocketRoute Website © RocketRoute

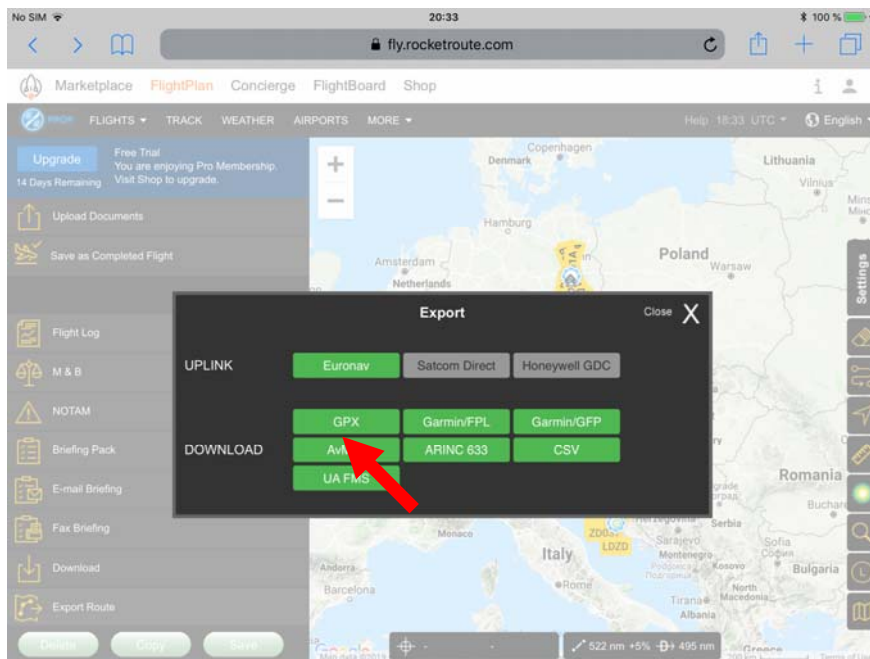


Figure 12 RocketRoute Website © RocketRoute

At this point the behavior will depend on your iOS version. On some versions a menu will open which allows you to select the app to open the *.gpx file and among those will be the ADLConnect app.

On other iOS versions a small download dialog will appear and once you select "Download" the file will be saved automatically into the "Documents" app. Then you have to switch over to the Documents app and there you can select the downloaded *.gpx file and the app selection menu will appear.

Still on other versions we have seen an additional button "More" which had to be pressed in the Safari browser to actually get a list of compatible apps to open the file.

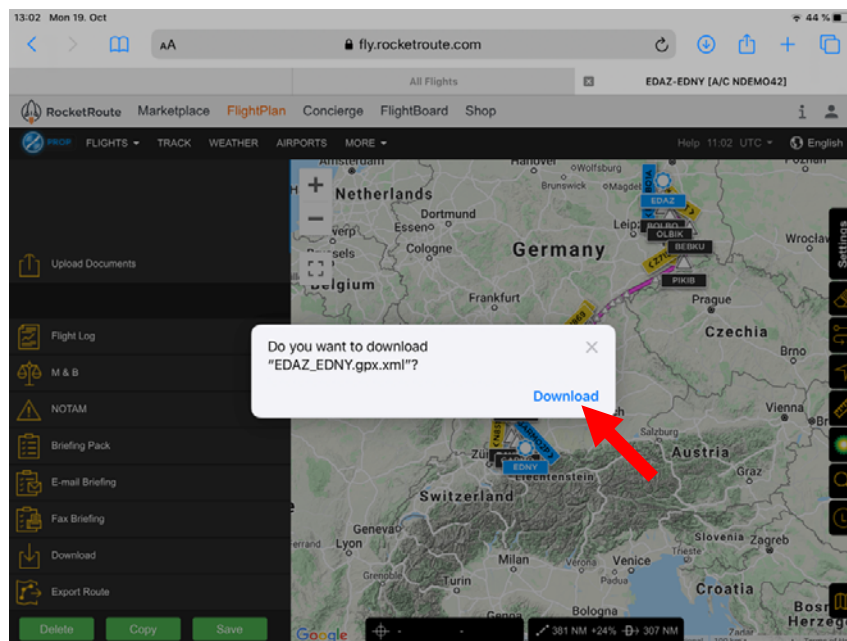


Figure 13 RocketRoute Website © RocketRoute



Figure 14 Opening the Documents App

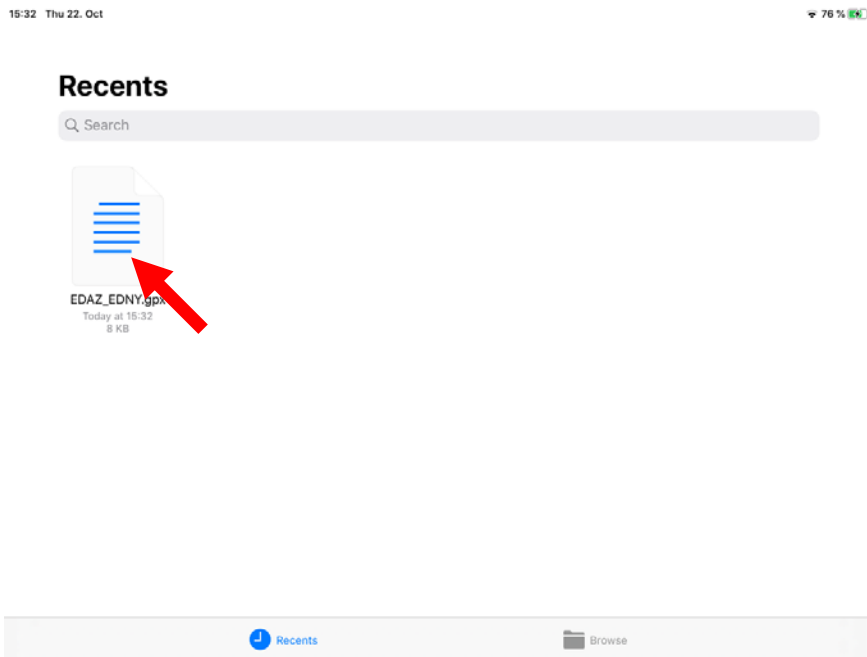


Figure 15 Selecting the *.gpx File in the Documents App

Flight Plan Import form SkyDemon App

In the current SkyDemon app press the "Route" button above the map if you are in the planning mode and then "Share". Once you are in the flying mode press the SkyDemon logo at the top left corner of the screen and select "Route" and then again "Share". In both cases a list of compatible apps will open and ADLConnect should be listed. Select ADLConnect and the flight plan will be imported.

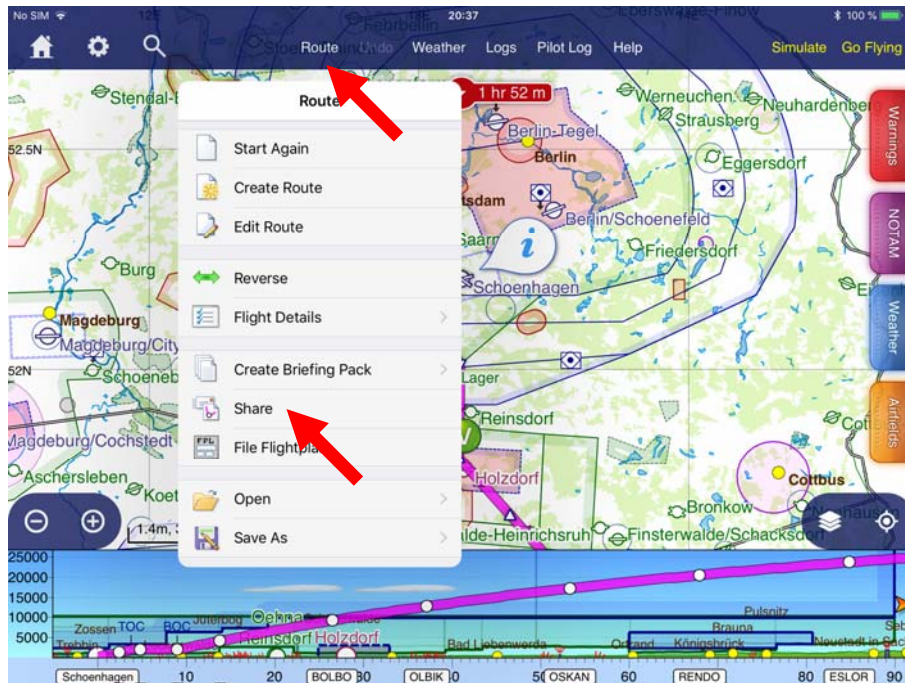


Figure 16 SkyDemon © SkyDemon

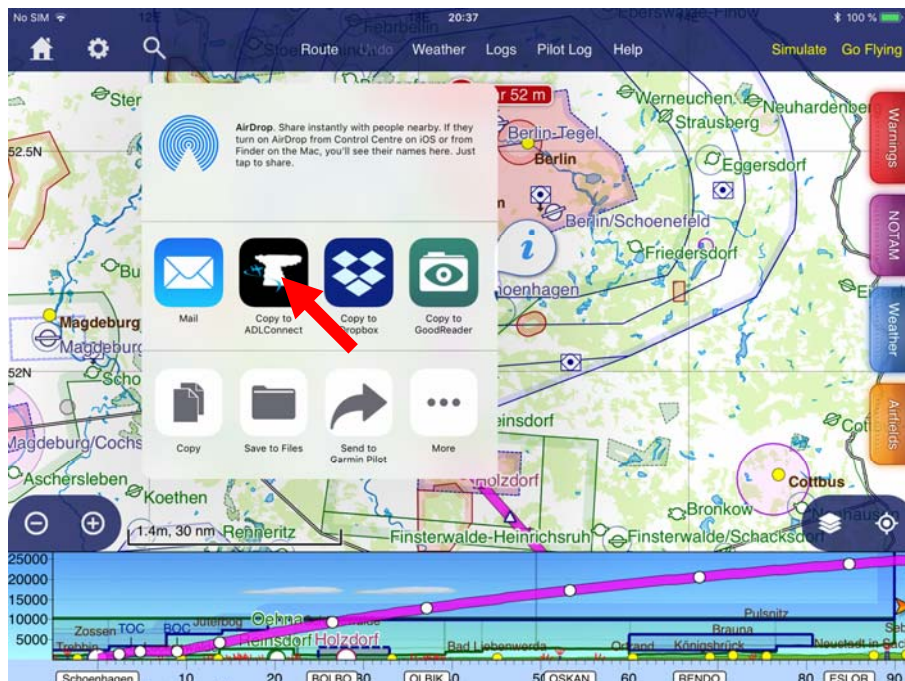


Figure 17 SkyDemon App © SkyDemon

12 Flight Plan Export to ForeFlight

In the ADLConnect app press on any waypoint of the flight plan. The menu will also offer you the "-> ForeFlight" button. If you have ForeFlight installed on the same iPad this will directly open the ForeFlight app with the exported flight plan.

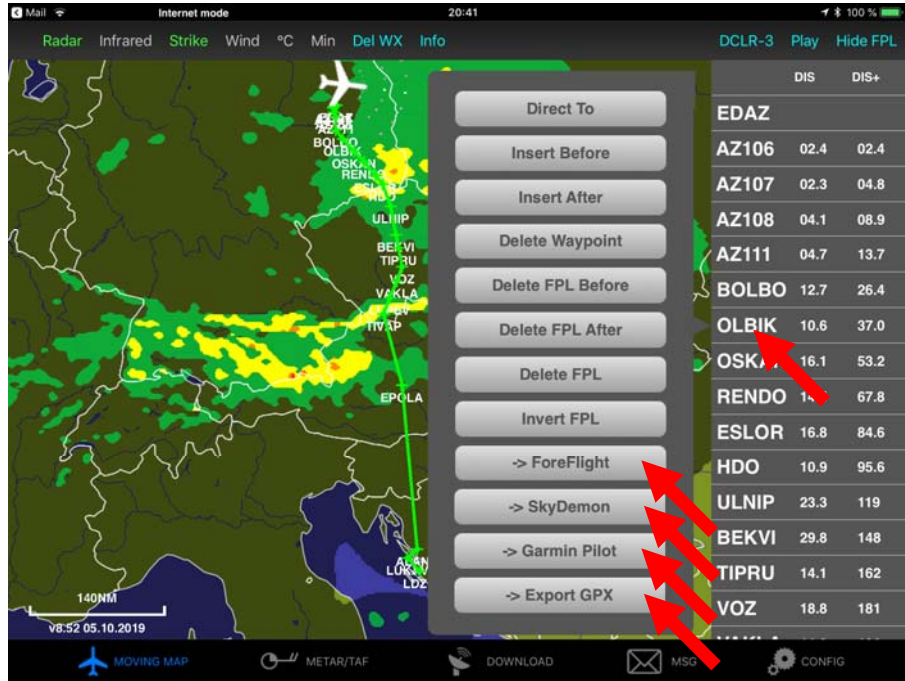


Figure 18 ADLconnect App Export Buttons

13 Flight Plan Export to Garmin Pilot

In the ADLConnect app press on any waypoint of the flight plan. The menu will also offer you the "-> Garmin Pilot" button. If you have Garmin Pilot installed on the same iPad this will directly open the Garmin Pilot app with the exported flight plan. (See Figure 15 above)

14 Flight Plan Export to GPX File Format

In the ADLConnect app press on any waypoint of the flight plan. The menu will also offer you the "-> Export GPX" button. This will generate a GPX file and a menu will open showing all compatible apps. If you have some file managing apps like GoodReader or similar installed you can also use that to store the flight plan as GPX file to open it later using ADLConnect or other compatible apps. (See Figure 15 above)

15 Flight Plan Export to SkyDemon

In the ADLConnect app press on any waypoint of the flight plan. The menu will also offer you the "-> SkyDemon" button. This will generate an *.flightplan file and open the iOS menu showing all compatible apps. If you have SkyDemon installed it will be listed and you can choose it to open that file. (See Figure 15 above)

16 Contact

Golze Engineering
Bredowstr. 29
10551 Berlin

<http://www.ing-golze.de>

mail@ing-golze.de
+49 30 39805204